

Approved Sept 19 1887

PROVIDENCE, R. I.

CITY ENGINEER'S OFFICE.
STREET LINE DEPT.

June 21, 1887

012946

PLAT OF VALLEY STREET

FROM HELME ST. TO DIKE ST.

IN FOUR SHEETS.

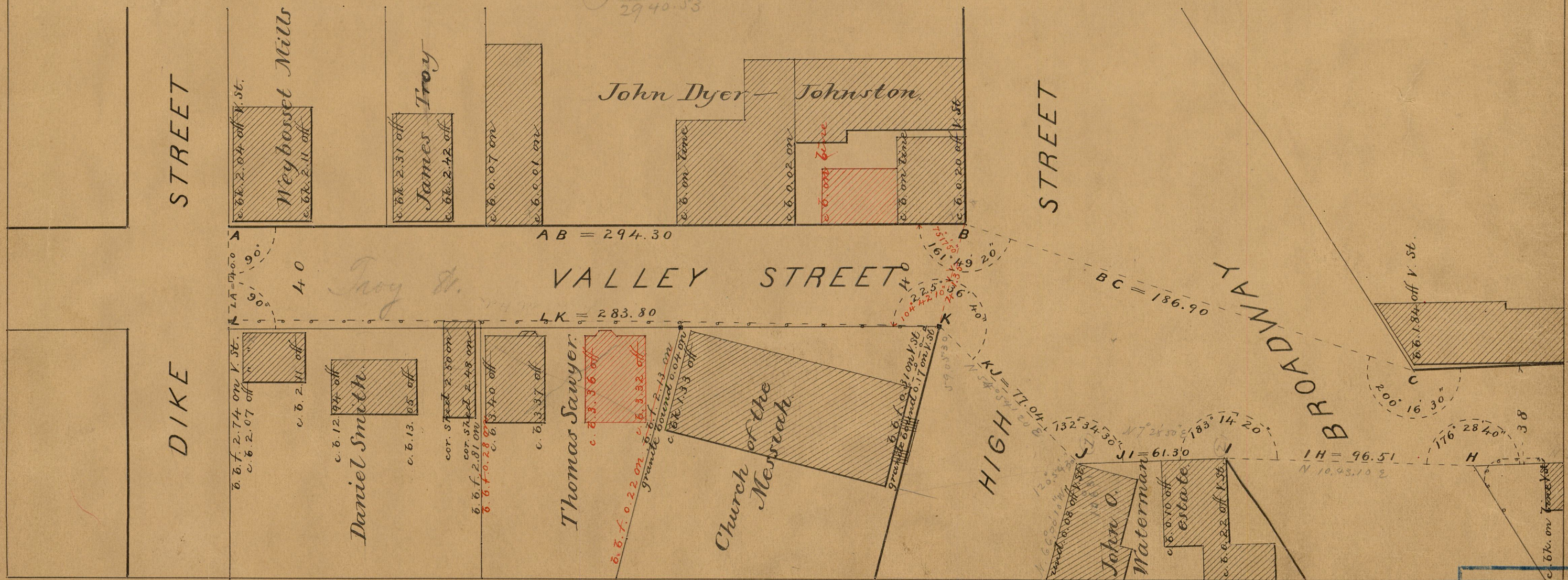
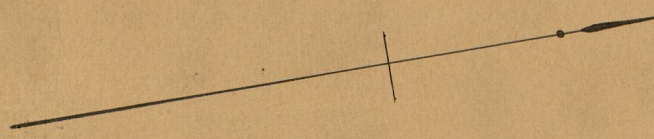
SCALE 40 FEET PER INCH.

Offsets and figures in red added May 31, 1889.

Changed to Troy Street, Dec. 26, 1889.

Providence R.I.
This plat accompanies
our report of this date.

835.13	834.87
874.28	875.00
742.66	720.17
186.90 (2)	95.61
294.30	61.30
	77.04
	283.80
2933.27	2947.79
2947.79	
29881.06	
2940.53	



59 05 30
225 36 40
289 42 10

OFFICE No. 9307
DRAWER " "

83
A-34